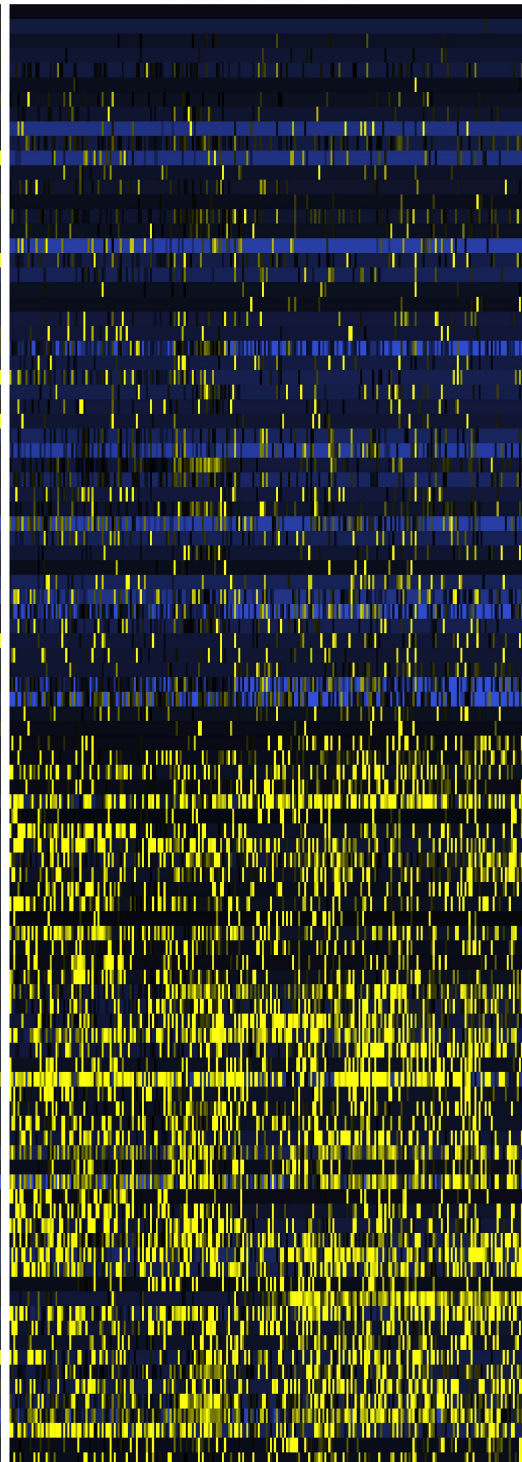
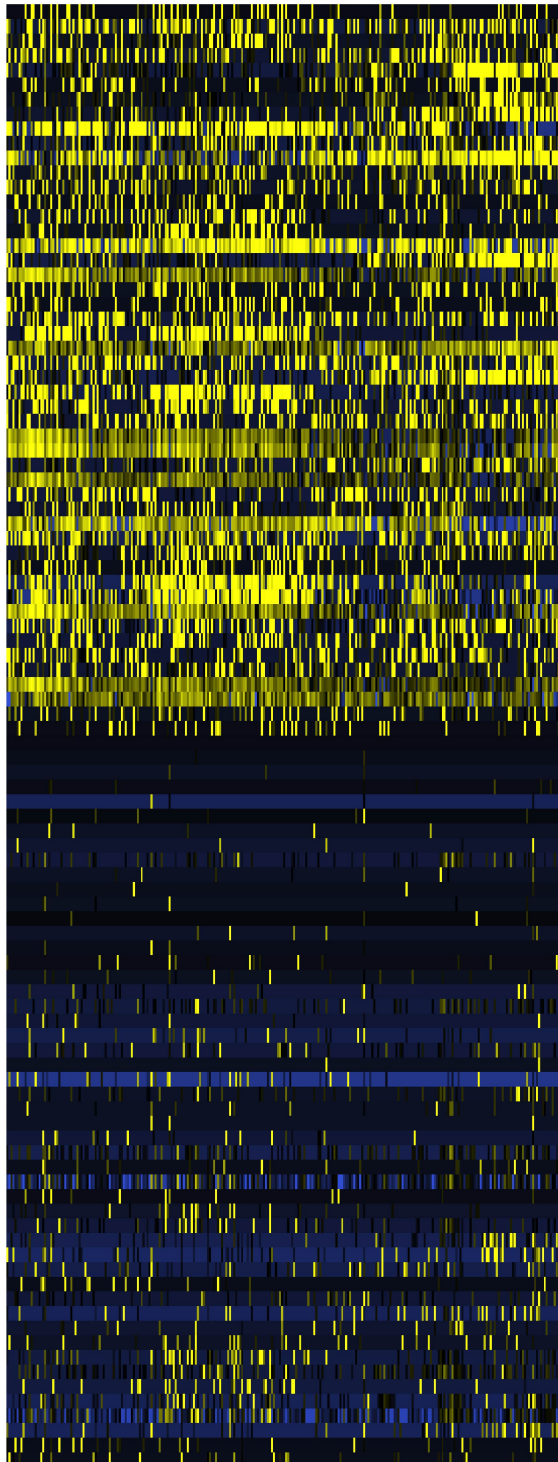
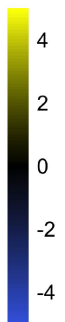


Figure 4L

pagoda2 cluster

#3: heart arterial SMC

#8: colon arterial SMC



Tmem215  
Gata4  
Art4  
Tnnt2  
Steap4  
Scn3a  
Arhgdib  
Sdc1  
Itih4  
Cavin2  
Higd1b  
Mb  
Atp1b1  
Wnt5b  
Fhl2  
Lxn  
Perp  
Cd36  
ENSMUSG00000101625  
Rapgef5  
Csnr1  
Rps4l  
Corin  
Mgp  
Ebf2  
Fabp4  
Efhd1  
Pdgd  
Astin1  
ENSMUSG00000092500  
ENSMUSG00000086320  
Ifi72a  
ENSMUSG00000103053  
Ncf2  
Hmgcs2  
Chchd10  
Prrx1  
Pdlim2  
Gmpr  
Pgam2  
Fblim1  
ENSMUSG00000106874  
Smad3a  
Ntrk2  
Zfpn2  
Actc1  
ENSMUSG00000097815  
Csrp2  
Lrrc14b  
Stac  
Adamts13  
Dmp1  
Adra1a  
Avpr1a  
Nkx2-3  
Bdnf  
Rergl  
Cck  
Podn  
Fendrr  
Sctr  
Hoxa10  
Sez6l  
Fhl5  
Hoxa11  
ENSMUSG00000084910  
Il6ra  
Tnc  
Enpp2  
Foxf1  
Nmnat2  
Adcy3  
Abcc8  
P2rx1  
Vlt  
Vipr2  
Hoxa11os  
Itih3  
ENSMUSG00000090208  
Cpeb1  
Prep  
Ras10b  
Serpinb6b  
Calhm5  
Ifitm1  
Emid1  
Itga4  
Siah2  
ENSMUSG00000075014  
Procr  
Wsf3  
Wnk2  
Adamts5  
Matn2  
Artn  
Col6a3  
Col1a1  
Trarg1  
Sphk1  
Birc4